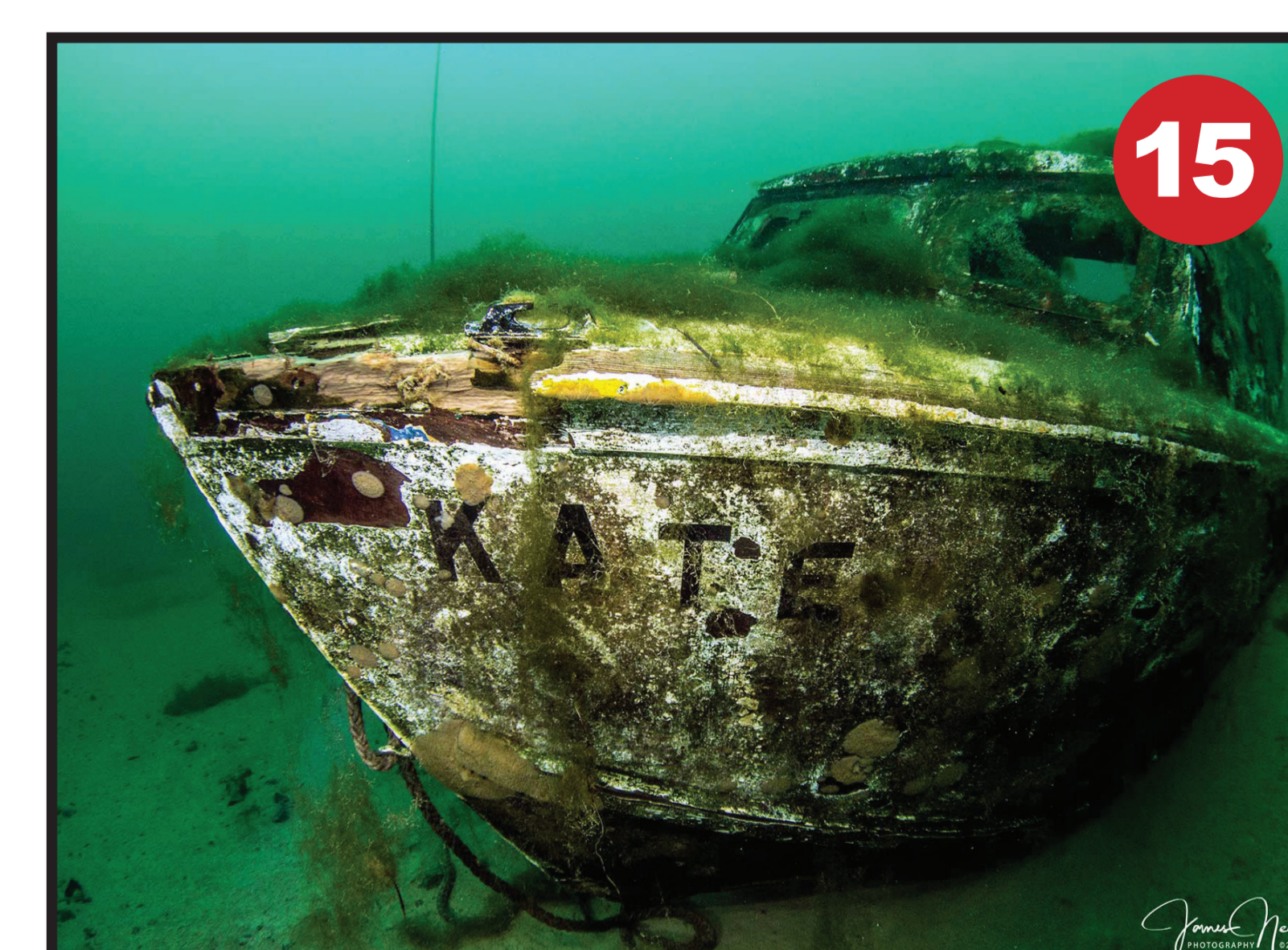
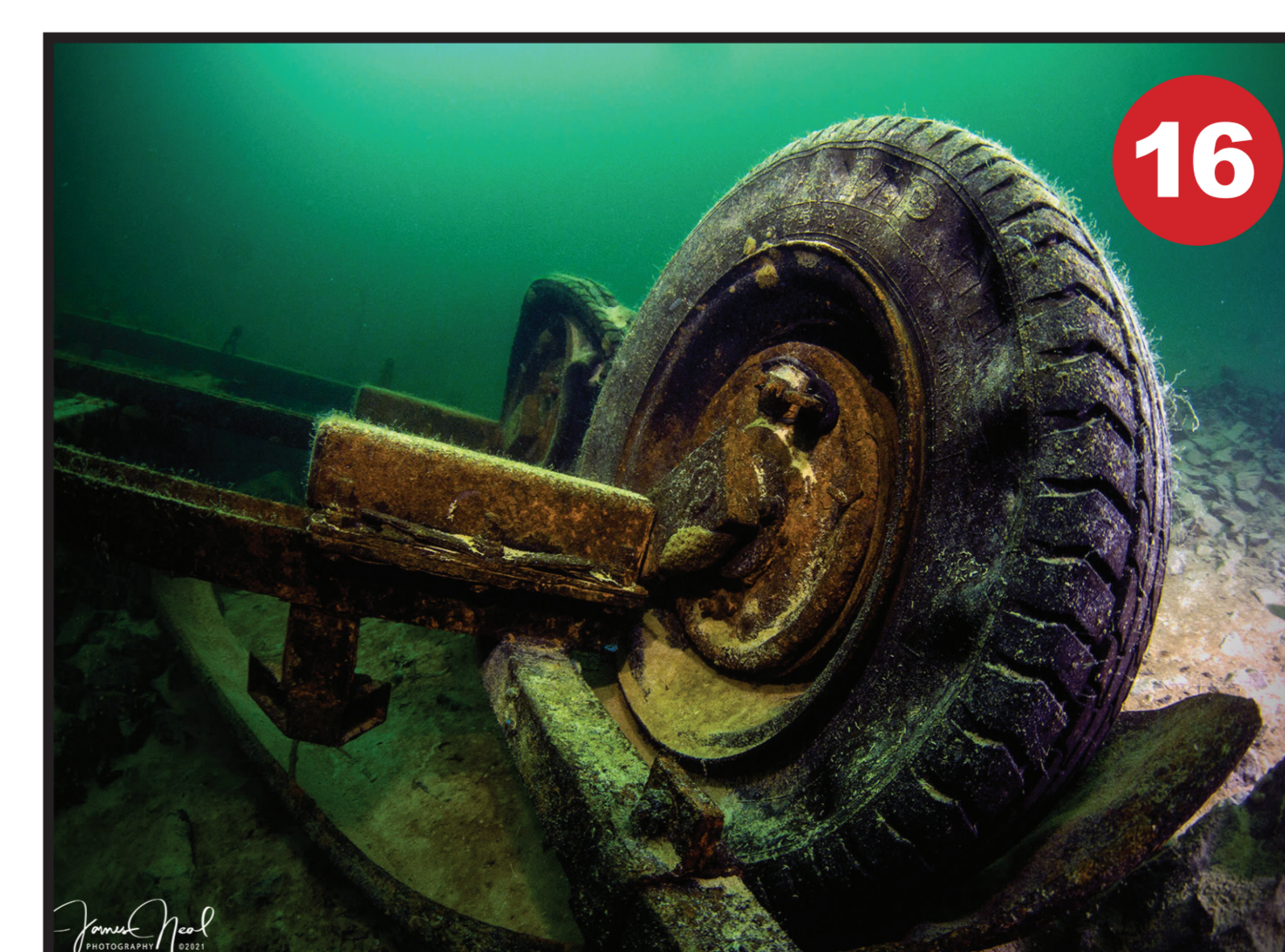
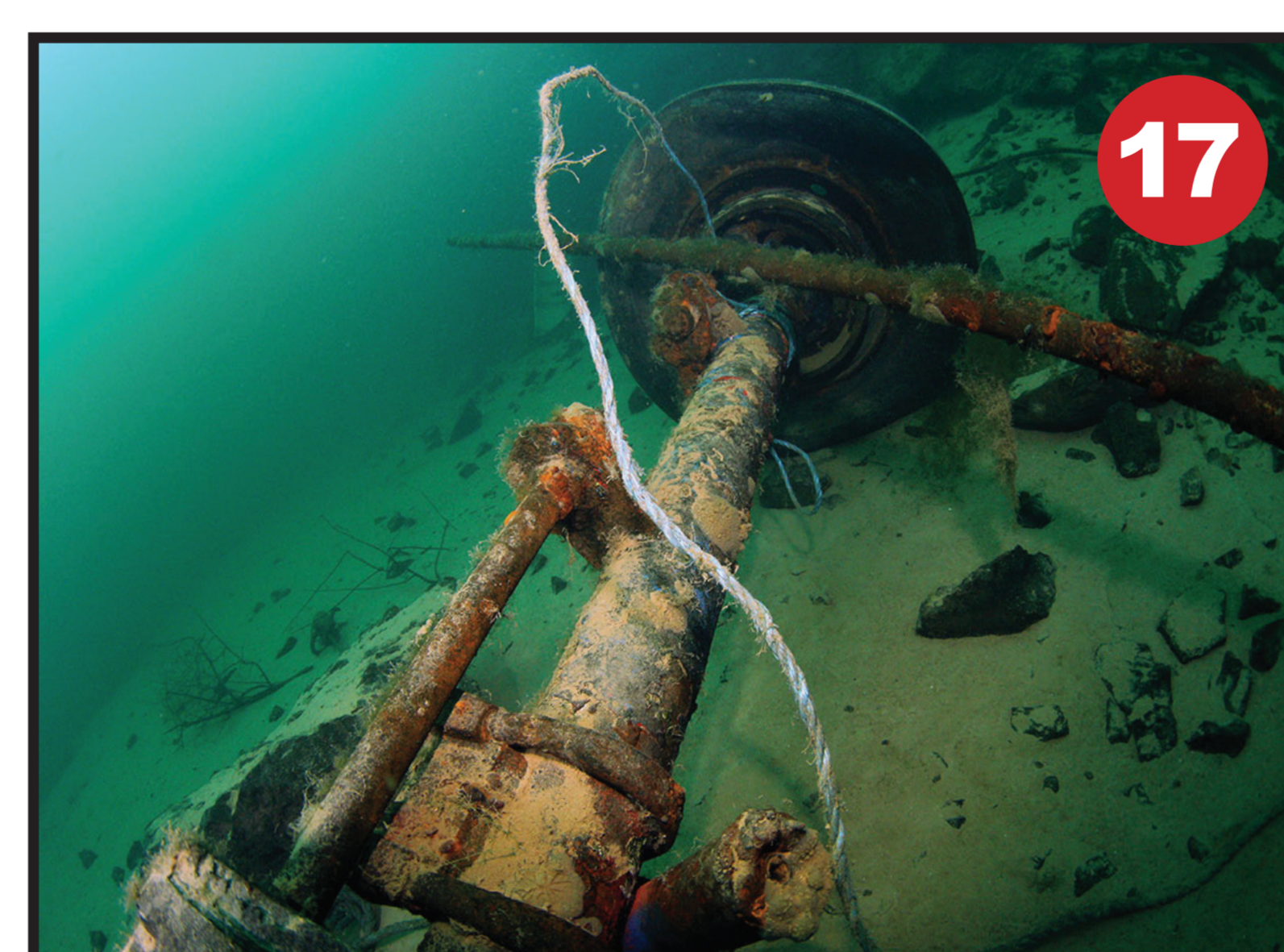
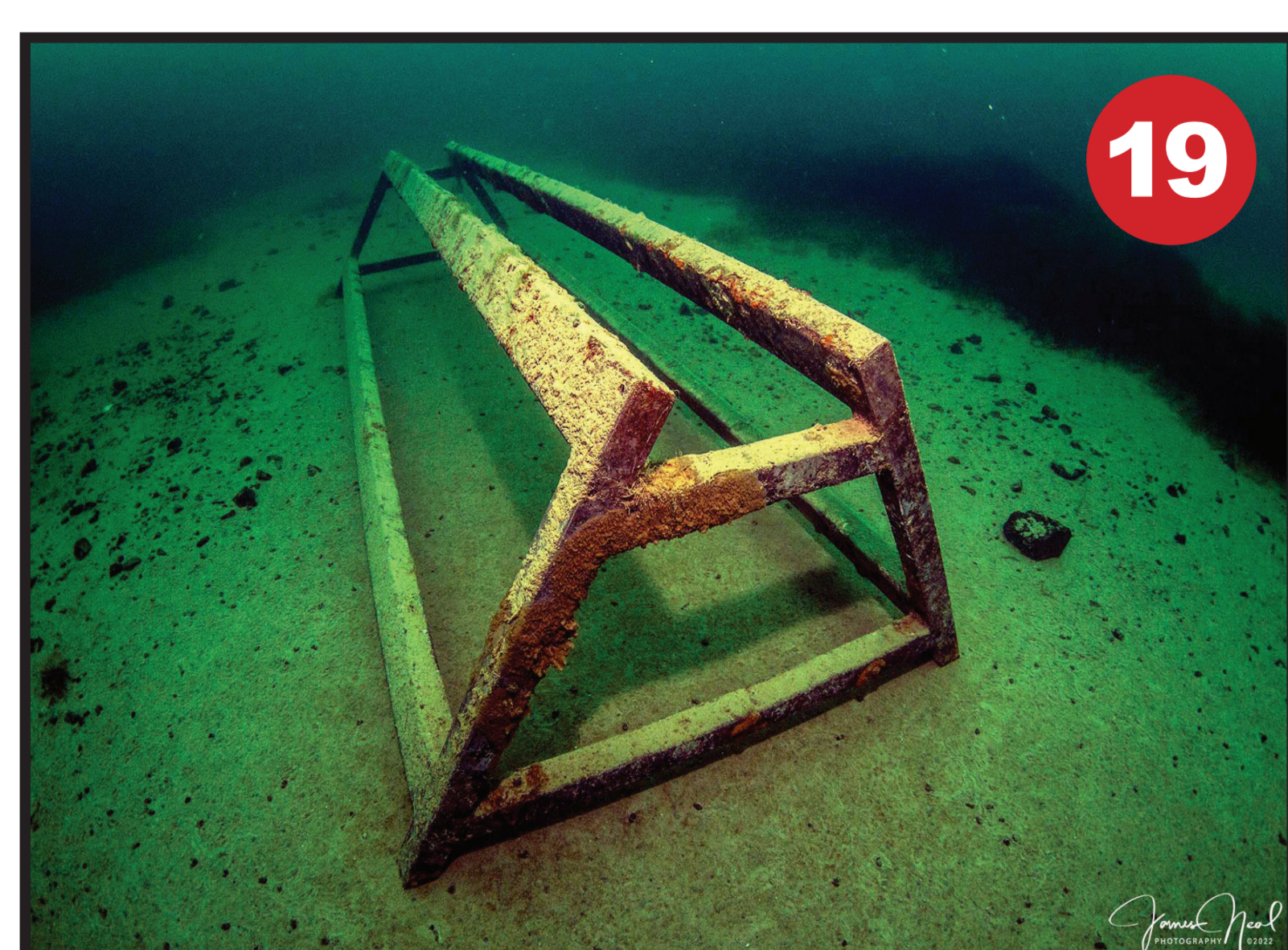
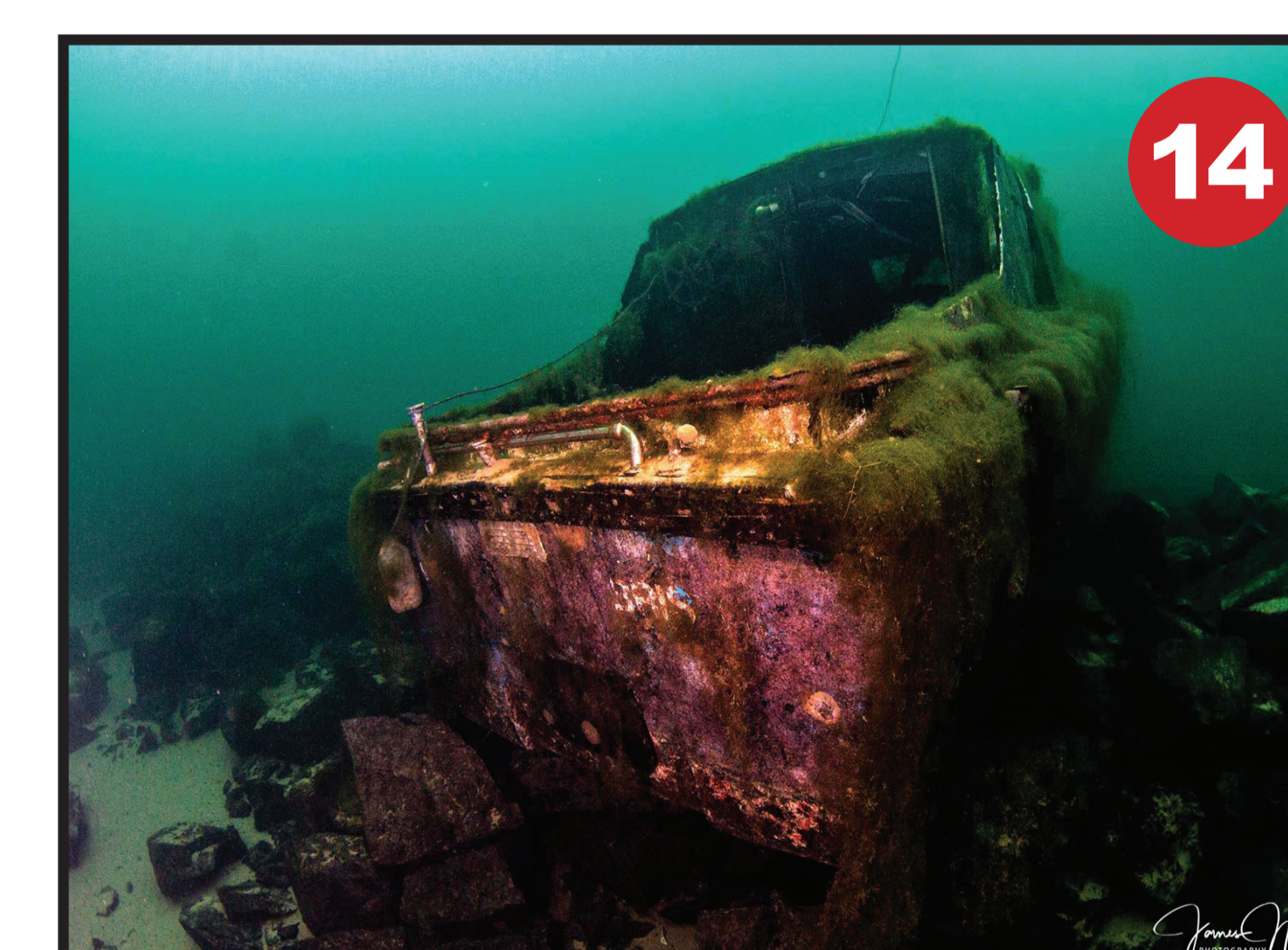
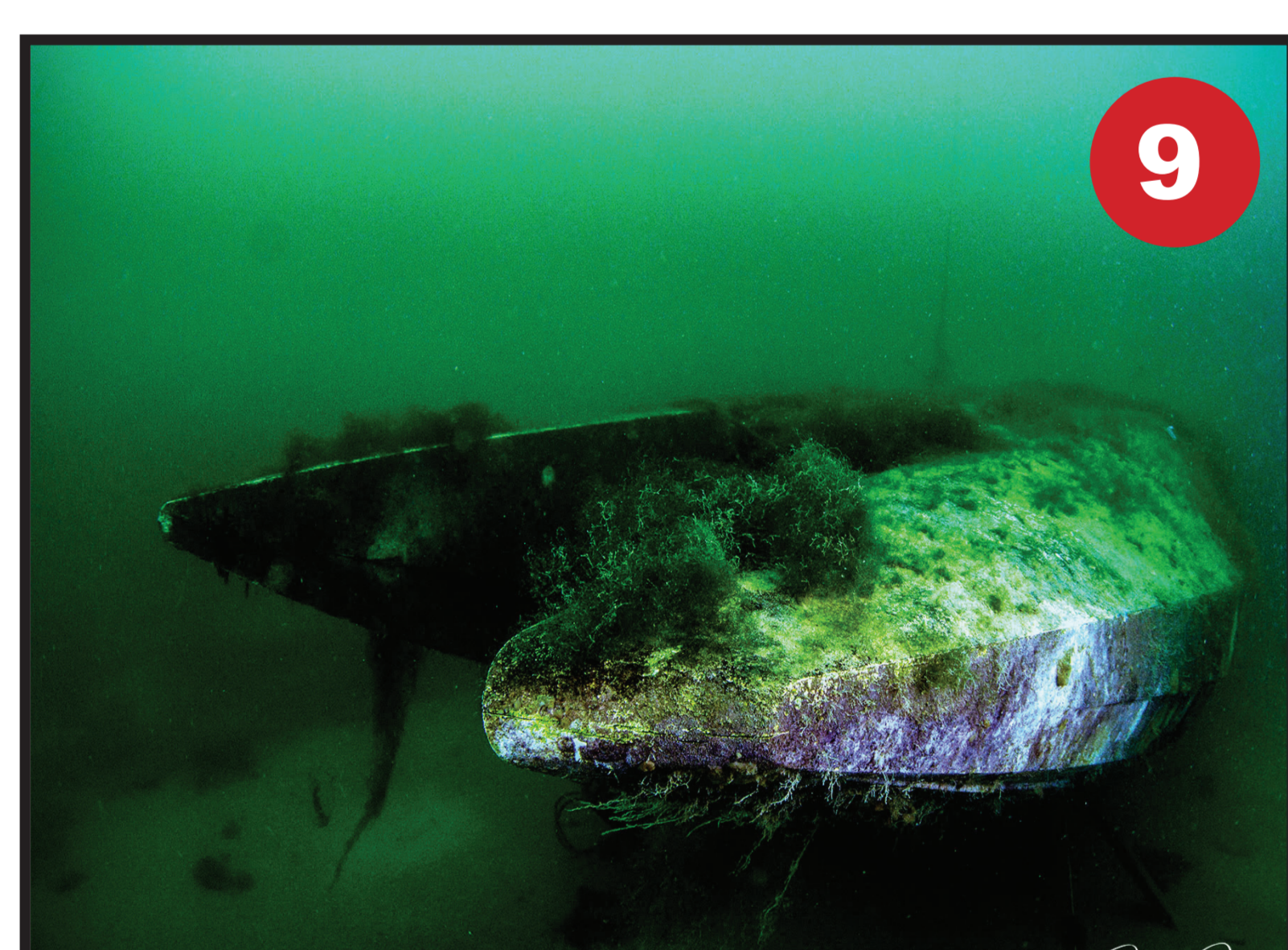
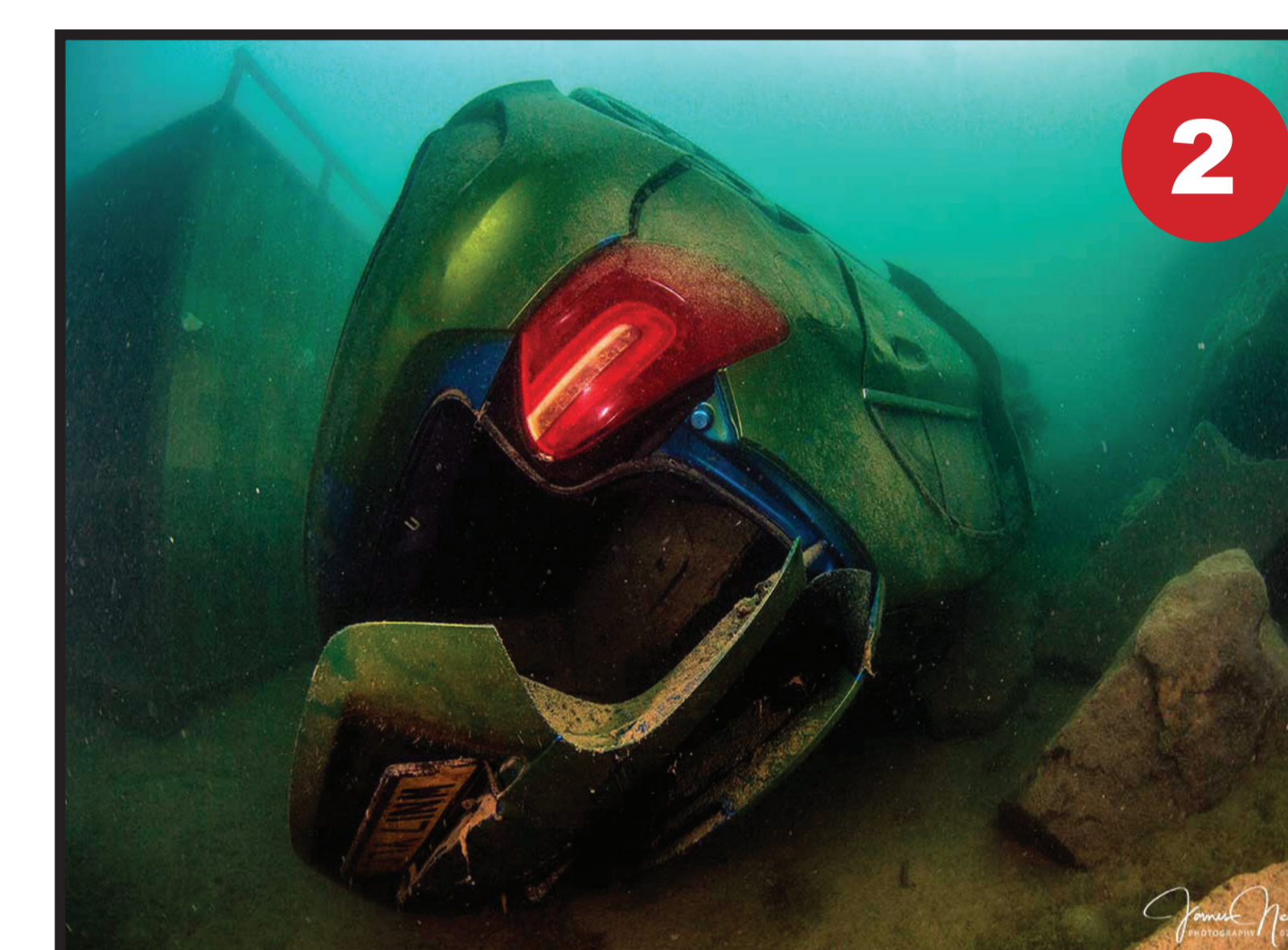
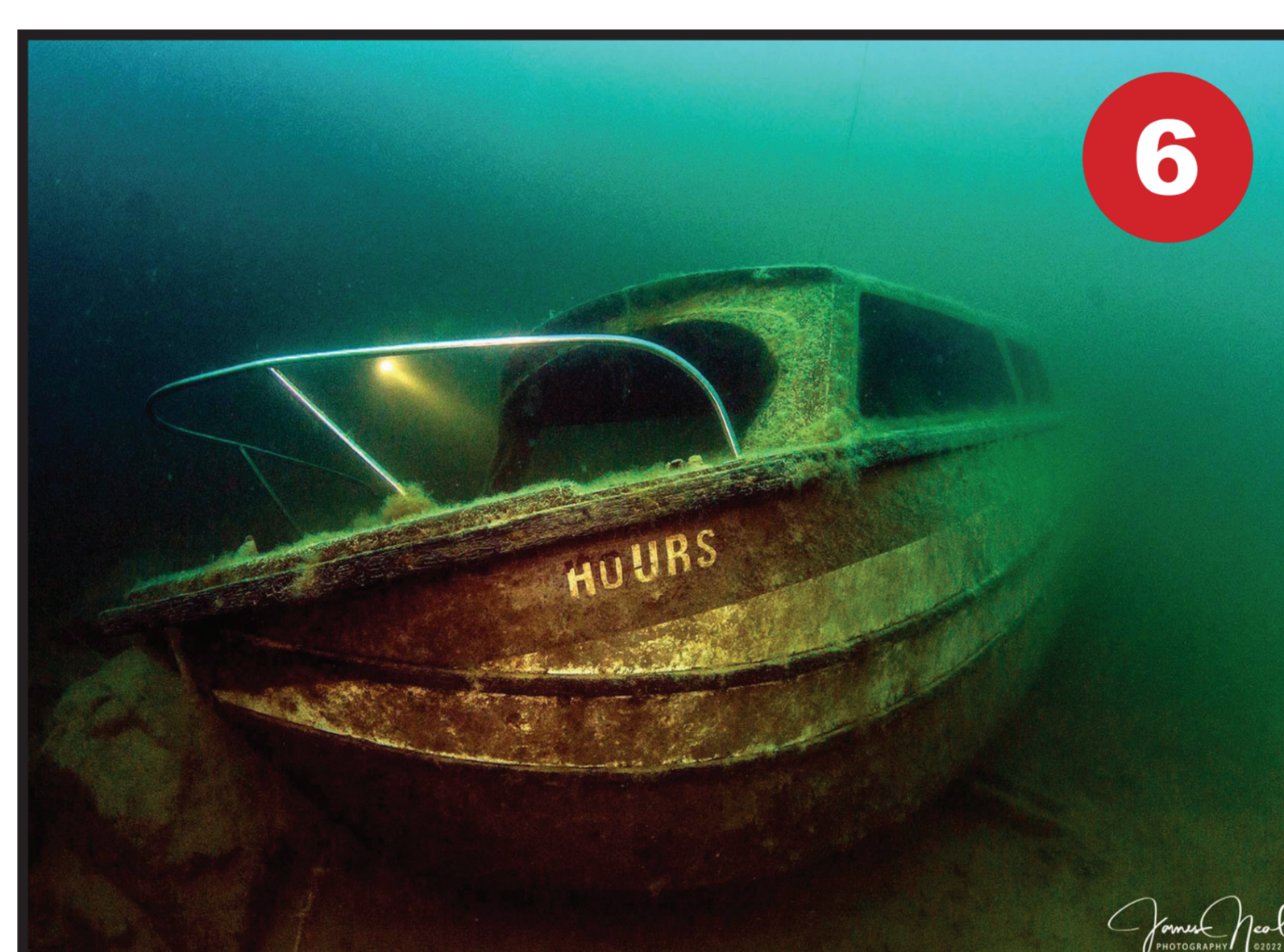
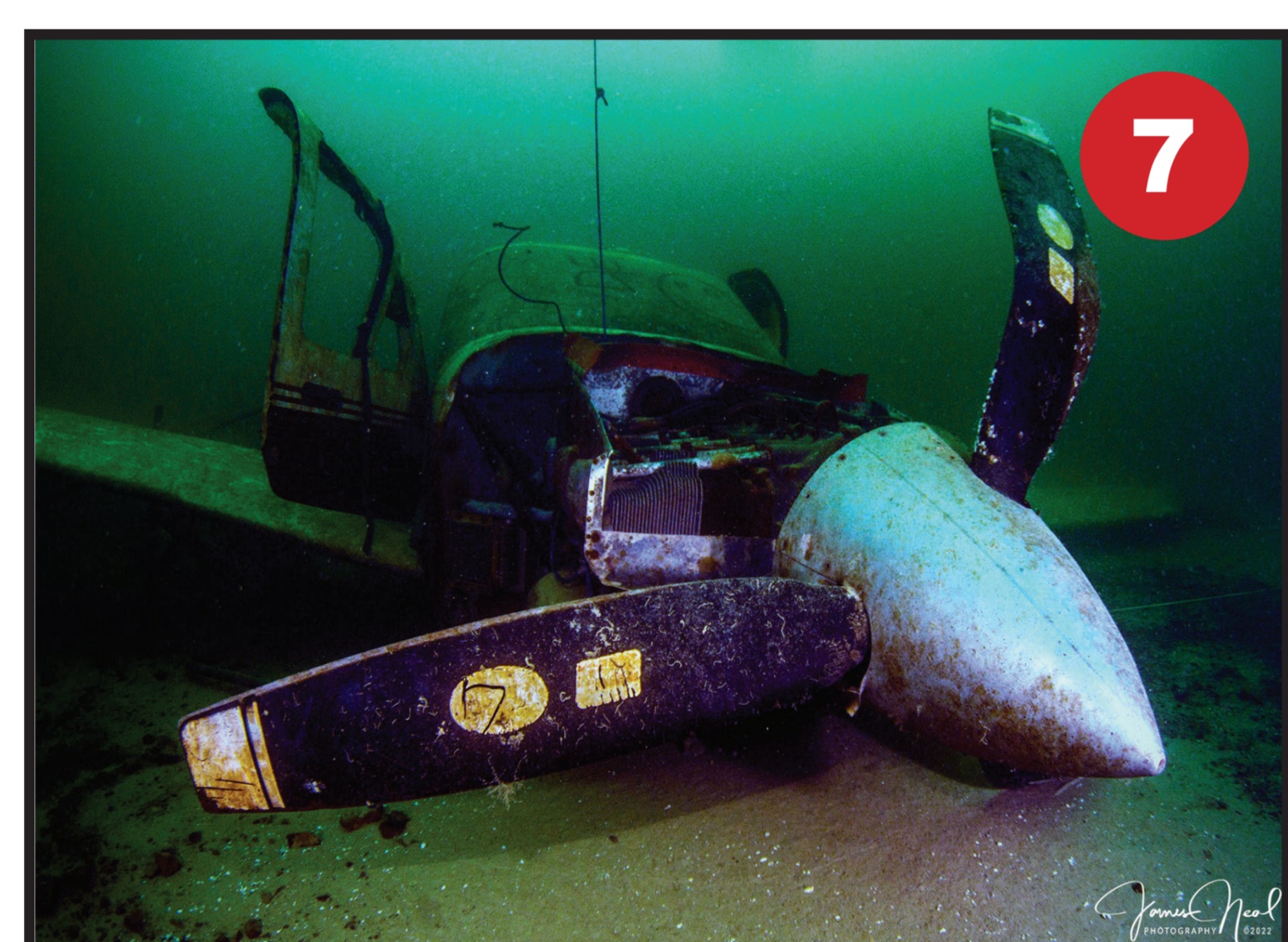
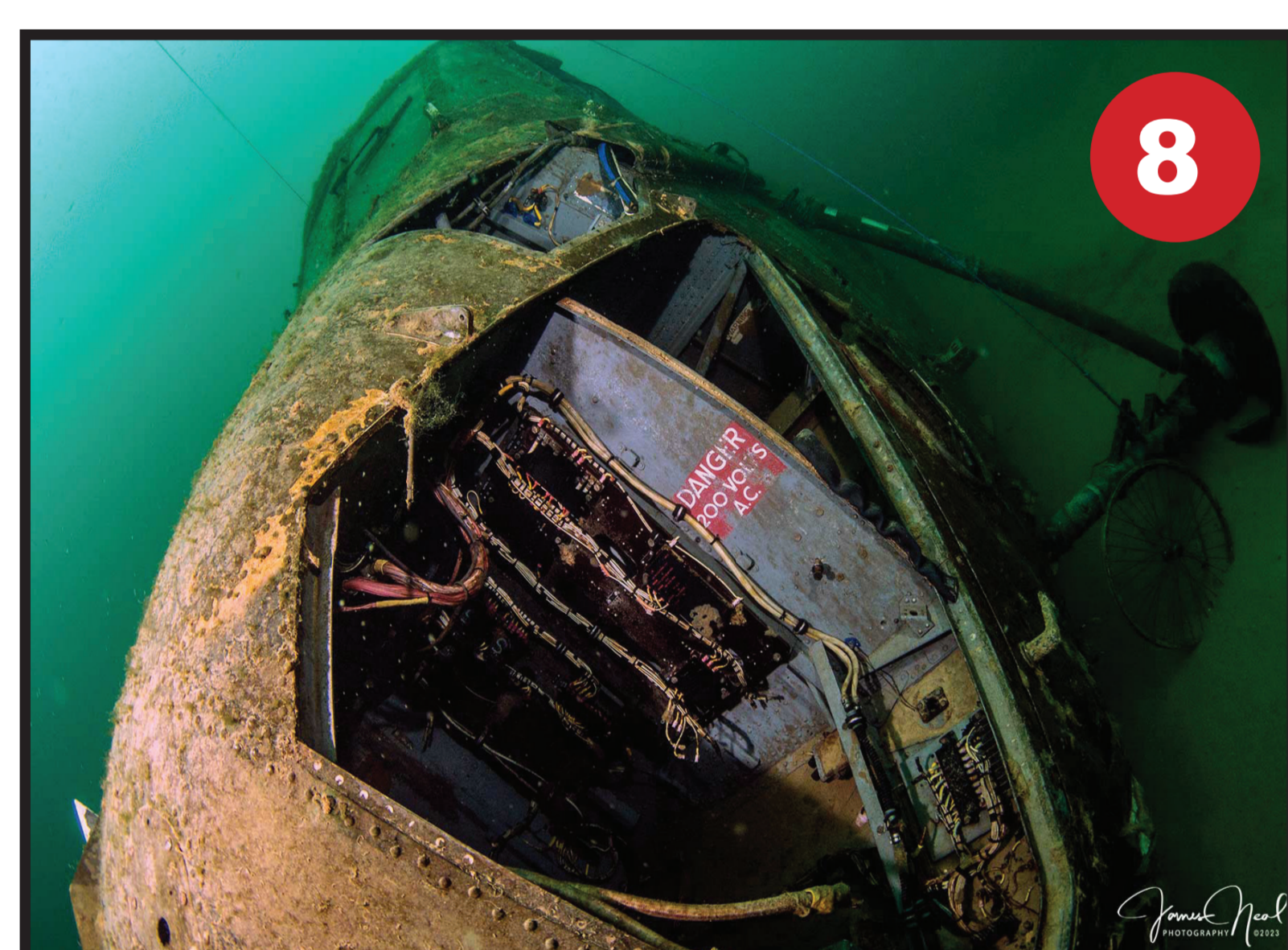


Copyright: James Neal - InDepth Dive Club

1. Shipping Container
2. Mercedes Cars x 2
3. Shipping Container
4. Transit Van
5. Shipping Container
6. 'HOURS' Boat
West from the Platform entry.
7. Cesna Aircraft
East from 'Hours' boat.
8. Wessex Helicopter
North East from 'Hours' boat.
9. Catamaran Powerboat
North East from the Helicopter or West from the tractor tyre.
10. Tractor Tyre
Due West to the Catamaran
11. Cabin Cruiser
Due North from the Catamaran
12. Traffic Lights
Due South from 'Ernie' or Due North to 'Ernie'.
13. 'ERNIE' Large Wooden Boat
Head due South to the traffic light or turn West and you will hit the west wall.
14. 'BURT' Wooden Boat
Head on a bearing of 240 degrees to 'Ernie'
Note, in poor viz it is extremely difficult to see.
15. 'KATE' Little Boat
Head on a bearing of 260 degrees to 'Burt'
16. Trailer -
Now buried under rocks (One wheel visible)
Due South takes you to 'Kate'
17. Lorry Axle
18. Dinghy (TBC)
19. Torpedo Stand (Torpedo now gone)
Head North East from the cabin cruiser (11)
20. Moped



**THIS IS STILL A WORK IN PROGRESS AND A FEW ITEMS
HAVE YET TO BE ADDED AND ALL BEARINGS
NEED TO BE DOUBLE CHECKED.**



**'THE PIT' IS
MARKED WITH
ORANGE STRIPES**